



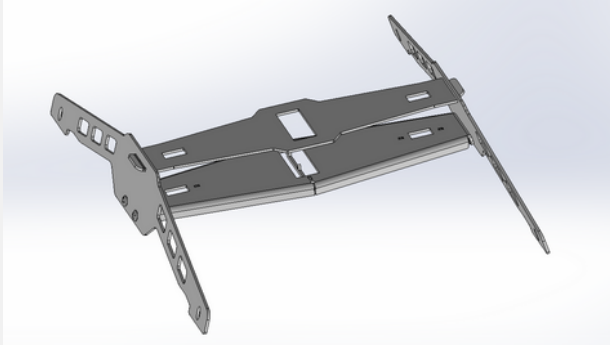
H-Base For Paper or Steel Targets- Stand Base

Part Number

TS-HB-2X4

Tools Required

- 13mm Wrench



Assembly Steps: (Part will be assembled upside down)

1. Layout all items onto work bench
2. Slide the Top Cross Support into the feet, as Shown in Fig. 1
* *Note. Bends go toward work bench/facing top of stand**
3. Slide Bottom Cross Support in between feet, as shown in Fig. 2
4. Insert Carriage bolts & finger tighten Nuts onto bolt as you install all 4 pieces, as shown in Fig. 3
5. Tighten All Hardware

FIG 1.

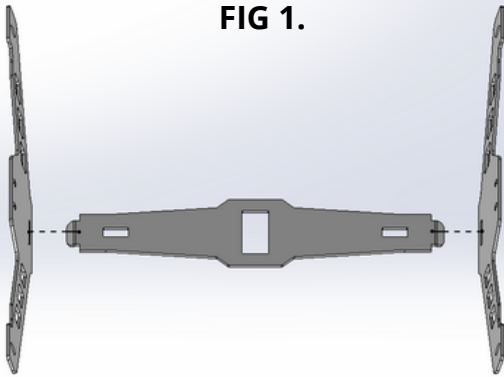


FIG 2.

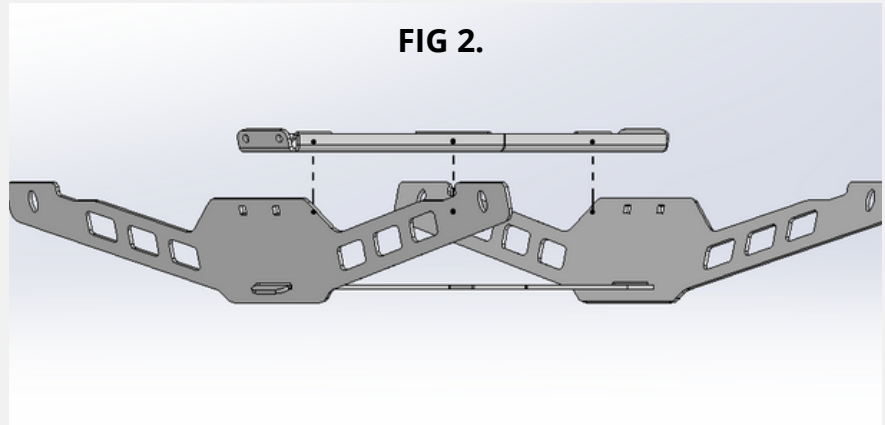


FIG 3.

